

Briggs



FORTH DRUMMER

ENQUIRIES@BRIGGSMARINE.COM

+44 1592872939

VESSEL DETAILS

YEAR OF BUILD

2012

LENGTH

24.5m

BREADTH

10.4m

MAX DRAFT

2.71m

MIN DRAFT

2.38m

MAIN ENGINES

2 x Doosan 4V222 TIH

CRANES

Kocurek KE200

GROSS TONNAGE

146T

WINCHES

1 x 30T SWL anchor handling winch
4 x Kocurek 6T SWL mooring winches
1 x 20T SWL tugger winch

ACCOMMODATION

6 Berths

3 Cabins

CERTIFICATION

MCA Workboat Code, Category 2

BHP

1601

BOLLARD PULL

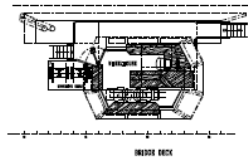
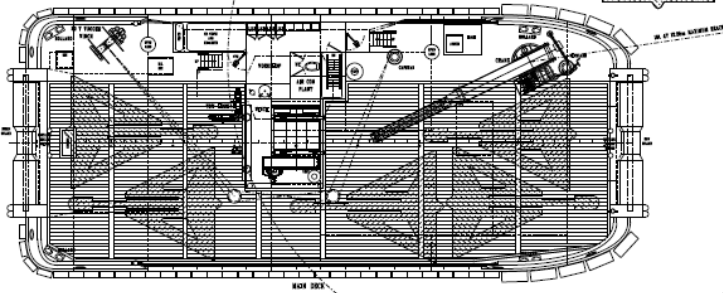
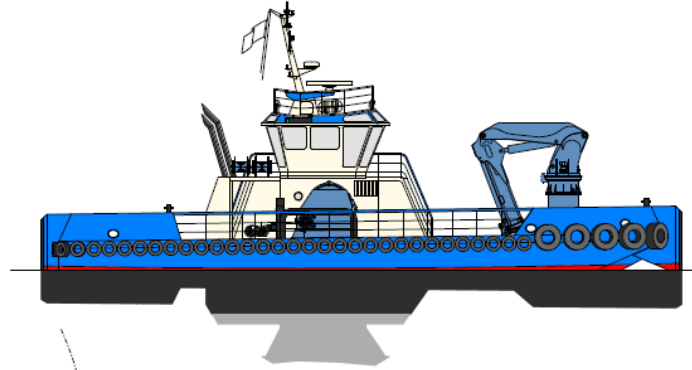
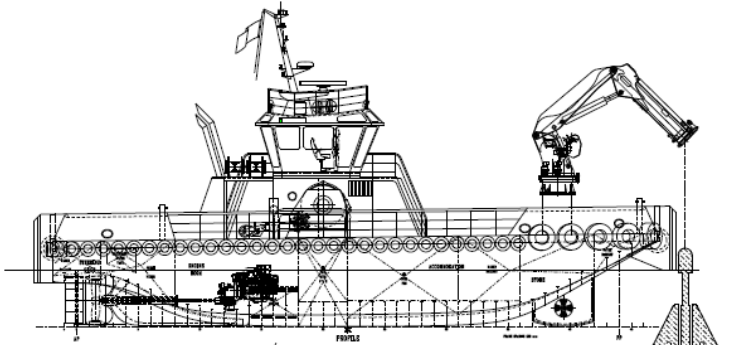
23.5T



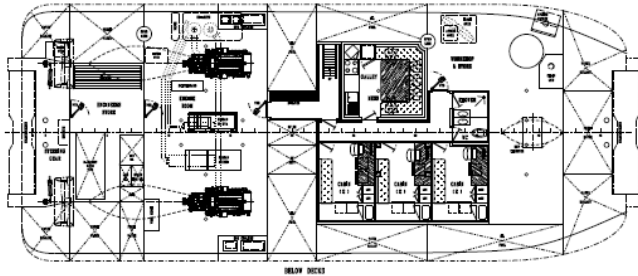
FOR DETAILS:

ENQUIRIES@BRIGGSMARINE.COM

+44 1592872939



INSIDE DECK



INSIDE DECK

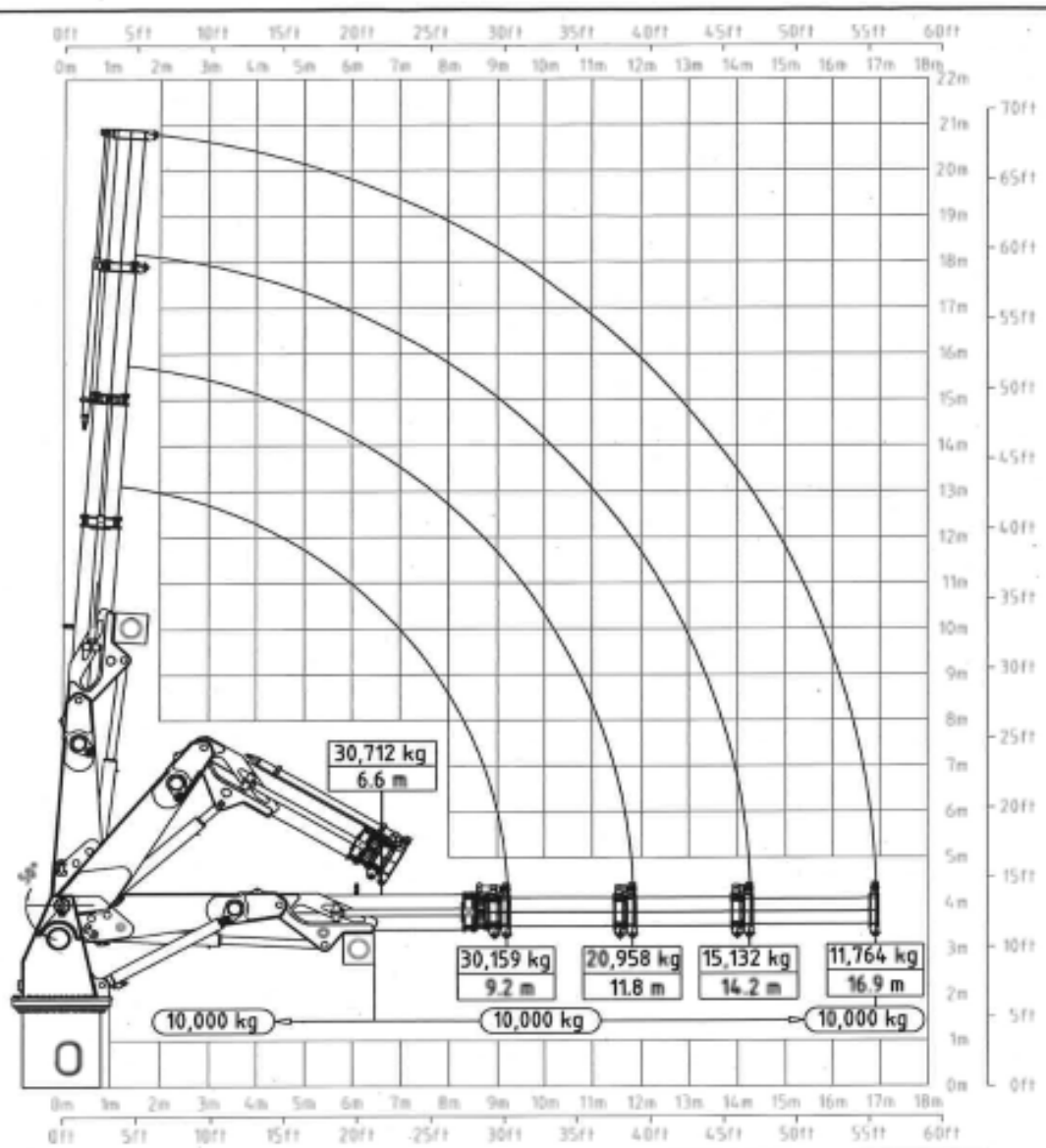
PRINCIPAL DIMENSIONS

LENGTH OVERALL	26.00 M
LENGTH OVERALL (Hull)	24.50 M
LENGTH B.P.	22.00 M
BREADTH MLD.	10.40 M
DEPTH MLD.	3.60 M

MCA WORKBOAT CODE
AREA CATEGORY 1

MACDUFF SHIP DESIGN
24.5 m MULTI MAC
FOR KOCUREK MARINE

REV.	DESCRIPTION	BY	DATE	CHKD.	DATE
C	REVISED DECK LAYOUT, COULD LIFTING, BLACK WATER TANK REDESIGN	BY	06/07/10	CHK	06/07/10
B	SPED TANKER SMALL TRL IN DECKS & COILING REDESIGNED DECK	BY	04/11/10	CHK	04/11/10
A	ADDN DECKS TO MAIN DECK AND INCREASED DECK	BY	08/02/10	CHK	08/02/10
APP-01	SKD				
DATE	04/07/10				
TITLE		24.5m MULTI MAC GENERAL ARRANGEMENT		REF	0700-000
DRAWN BY	BY	CHECKED BY	JKR	DRAWING NO	1
DATE	16/03/10	DATE	16/03/10	SCALE	1:1
<p>THIS DRAWING AND THE INFORMATION IT CONTAINS ARE THE PROPERTY OF MACDUFF SHIP DESIGN LTD. IT IS NOT TO BE REPRODUCED OR TRANSMITTED IN ANY FORM OR BY ANY MEANS WITHOUT THE WRITTEN CONSENT OF MACDUFF SHIP DESIGN LTD.</p> <p>MACDUFF SHIP DESIGN LTD. LOW SHORE, MACDUFF, ABERDEENSHIRE, SCOTLAND AB84 1SE. TEL: 01261 833825 FAX: 01261 833835 EMAIL: info@macduffshipdesign.com</p>					



NOTE

1. RATINGS BASED ON 30.0 MPa (300 BAR) CIRCUIT PRESSURE
2. CRANE MUST BE VERIFIED AND TESTED ON INSTALLATION.
3. CRANE MUST BE RATED IN ACCORDANCE TO VESSEL.

DIRECT HOOK LOAD → xx,xxx kg
x,x m

MAXIMUM WINCH CAPACITY (SIMPLE FALL) → xx,xxx kg

1	04/02/16	-	FS
ISS	DATE	MOD	DRN
NOT BINDING IN DETAIL			

KOCUREK
24 Airwright Road
Radleigh Road Industrial Estate
Ipswich IP2 8UB ENGLAND
Tel: +44 (0)1473 210477

CONFIDENTIAL
This drawing contains confidential information, the property of KOCUREK EXCAVATORS Ltd., to whom the copyright belongs. This drawing may not be copied or used for any purpose other than that for which it was made available without the prior written consent of KOCUREK EXCAVATORS Ltd. A provision of this drawing does not grant any rights under any industrial property rights of KOCUREK EXCAVATORS Ltd., nor of any third party.

TITLE **DATASHEET
DUTY CHART HOOK/WINCH LOAD
MARINE CRANE KE200**
DRG. NO. **50002957** SHT 1 OF 1